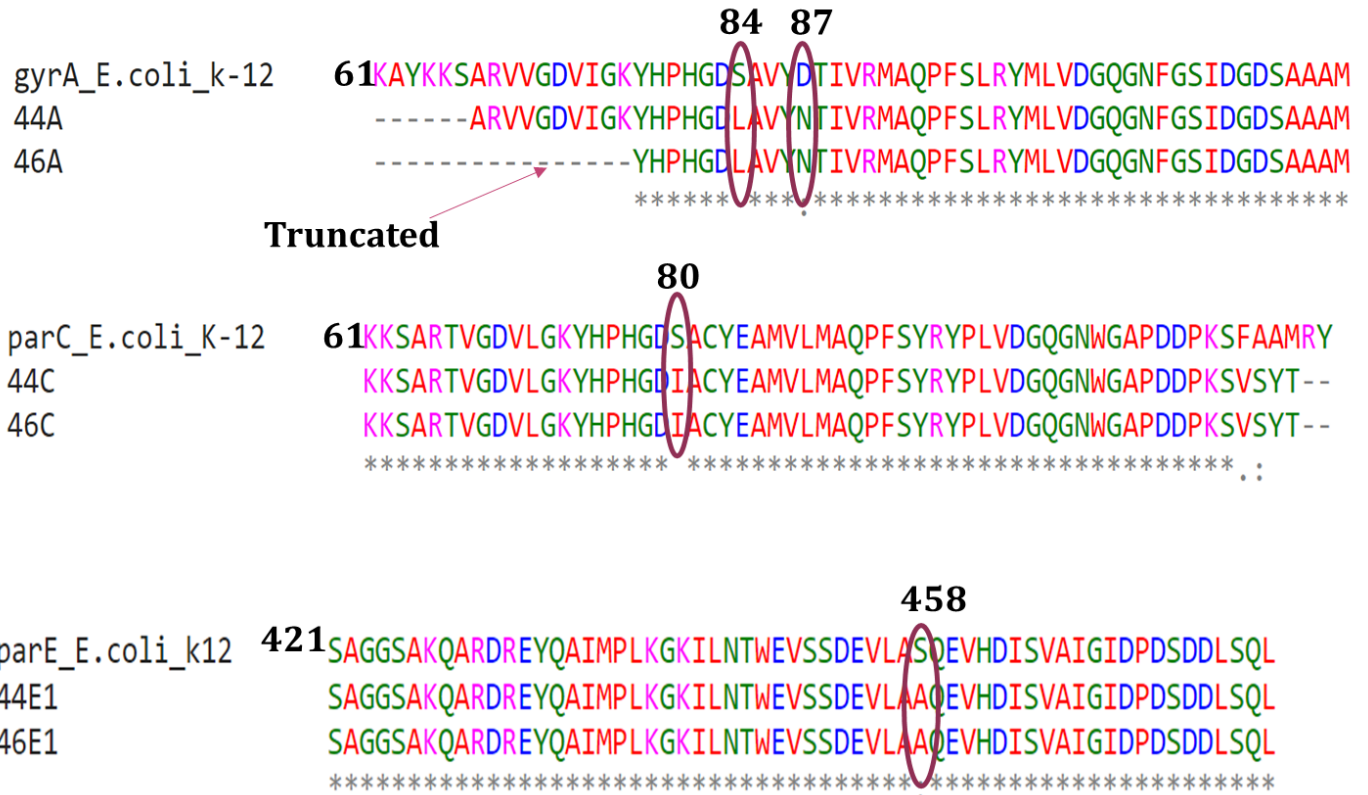


Supplementary Table 1. Results of the antibiotic susceptibility testing of the *E. coli* isolates

Iso lat e ID	Antibiotics												
	Aminogl ycosides	Carba penem	Cephalospo rin			Mac rolid e	Peni cilin	Chloram phenicol	sulfon amide	Quinolone			
	CN	MEM	C F M	F E P	C R O	AZ M	AM L	C	SXT	N A	O F X	M X F	C I P
DP -01	I	S	R	R	R	S	R	S	S	S			
DP -02	R	S	R	S	S	R	R	R	R	R	R	R	R
DP -03	R	S	R	S	S	R	R	R	R	R	S	R	I
DP -04	S	S	R	I	R	R	R	S	R	I			
DP -05	I	S	S	S	S	S	S	S	S	S			
DP -06	S	S	S	S	S	S	S	S	S	R	I	R	I
HC -1	I	S	R	S	S	R	R	S	S	R	S	S	S
HC -2	I	S	R	I	S	R	R	S	S	R	S	S	S
HC -3	S	S	S	S	S	R	R	S	R	R	S	R	S
HC -4	S	S	S	S	S	S	S	S	S	S			
HC -5	S	S	S	S	S	S	S	S	S	R	S	R	S
HC -6	S	S	S	S	S	S	I	S	S	S			
HC -7	S	S	S	S	S	S	S	S	S	S			
HC -8	S	S	S	S	S	S	R	I	S	R	R	R	R
HC -9	S	S	S	S	S	S	R	R	R	R	R	R	R

U-47	S	I	S	S	S	R	S	S	R	S			
------	---	---	---	---	---	---	---	---	---	---	--	--	--

1: Aminoglycosides; 2: Carbapenem; 3: Cephalosporin; 4: Macrolide; 5: Penicilin; 6: Quinolone; 7: Chloramphenicol; 8: Sulfonamide; 9: Fluoroquinolone



Supplementary Figure 1. Multiple sequence alignment of the sequenced QRDR regions of *gyrA*, *parC* and *parE* of isolates U44 and U46 with *E.coli* K12 as a reference strain.