

**LECTOTYPIFICATION OF *DIOSCOREA ZINGIBERENSIS*  
(DIOSCOREACEAE), AN ENDEMIC SPECIES FROM CHINA**

RAVIKIRAN S. PAGARE<sup>1</sup>, ARISDASON WILSON<sup>2</sup> AND MALAPATI K. JANARTHANAM

*Department of Botany, Goa University, Goa 403206, India*

*Keywords: Dioscorea; Lectotype; Syntype; China.*

Wright (1903) described *Dioscorea zingiberensis* (sect. *Stenophora* Uline), a species endemic to China, based on the collections from Ichang, China. The specimens studied, annotated and listed in the protologue by the author are: ICHANG: *A. Henry* 407, 1520, 1621! The syntypes are housed at K and BM. At BM, except *A. Henry* 1621 (BM-000958177, image!), the other syntypes could not be traced, however, the specimens bearing the same collector's name and field numbers *A. Henry* 407, 1520, 1621! could be located at CAL.

Among the all syntypes, the specimen, *viz.* Ichang and immediate neighbourhood, 02/1887, *A. Henry*, 1520 at K [<http://specimens.kew.org/herbarium/K000098098>] has been selected here as the lectotype for the name. Uline who studied its duplicate specimens at B (B-10 0296760, image!) annotated it as *Dioscorea henryi* Uline, probably on 6 April 1891, but did not publish the name. Later Diels (1900) published the name *Dioscorea henryi* in Bot. Jahrb. Syst. 29(2): 261. 1900 (*nom. nud.*), including the same specimen without description. Hence, Wright must have inscribed "*D. henryi* Uline in Engl., Jahrb. xxix. p. 261, (*nom. nud.*)" besides the name *D. zingiberensis*.

***Dioscorea zingiberensis*** C.H. Wright, J. Linn. Soc. Bot. 36: 93 (1903). (Fig. 1).

*Type:* CHINA: Ichang and immediate neighbourhood, 02/1887, *A. Henry* 1520 (Lectotype K000098098, image! designated here).

---

<sup>1</sup>Corresponding author. Email: ravikiranpagare@gmail.com

<sup>2</sup>Botanical Survey of India, CGO Complex, Salt Lake City, Kolkata 700 064, West Bengal, India.

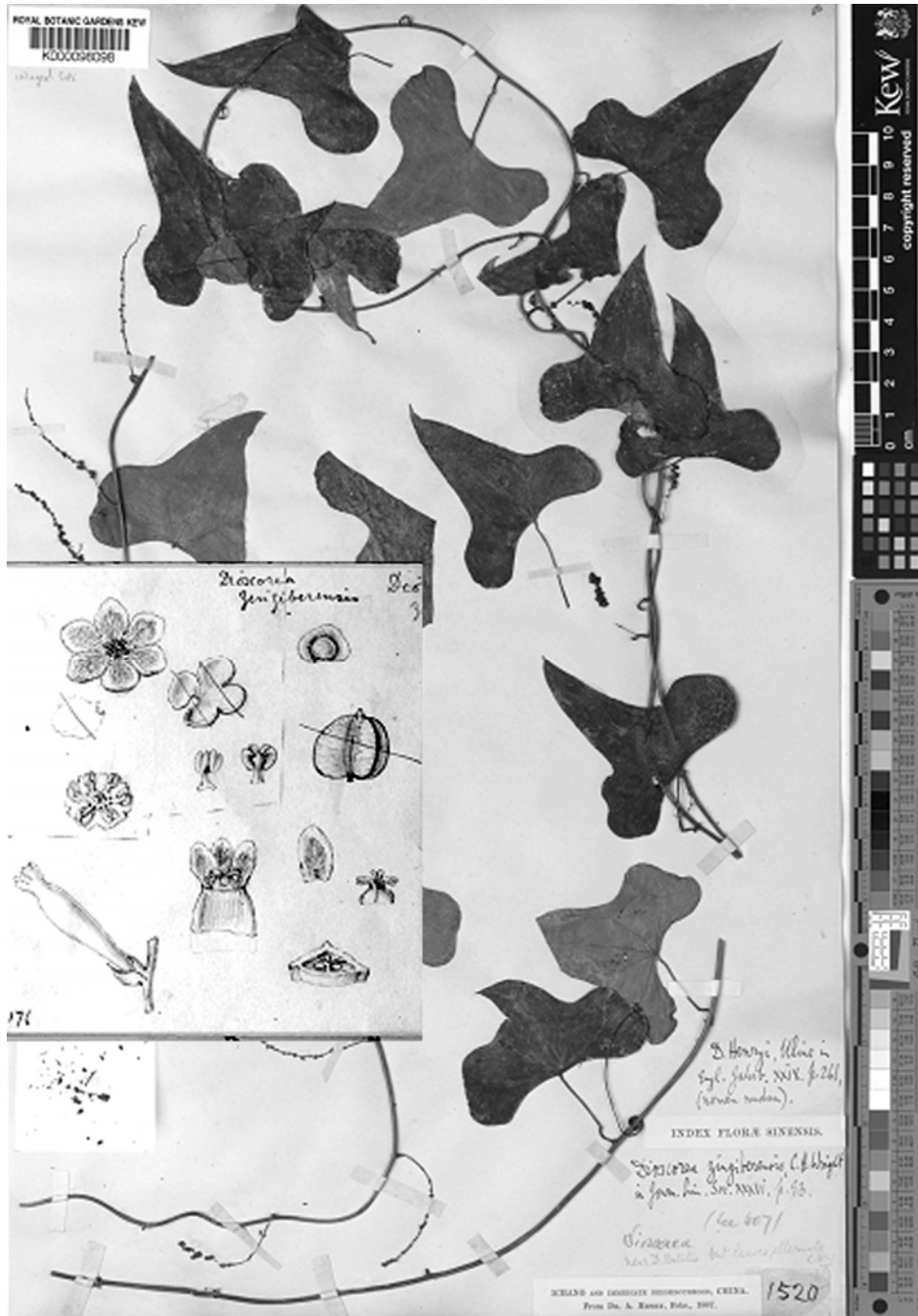


Fig. 1. *Dioscorea zingiberensis* C.H. Wright (A. Henry 1520 [K000098098, image!], K; Lectotype) [© RBG, Kew].

**Acknowledgements**

Authors are grateful to the Board of Trustees of Royal Botanic Gardens, Kew, for permission to publish the image of the selected lectotype and authorities of CAL, for permitting to consult the herbarium. First author is thankful to Dr. K.N. Gandhi, Senior Nomenclatural Registrar, HUH, Cambridge, for suggestions and also to UGC-RGNF (2013-14/RGNF-2013-14-SC-GOA-44299), for the financial assistance.

**References**

- Diels, F.L.E. 1900. Die Flora von Central-China. Bot. Jahrb. Syst. **29**(2): 169–659.
- Wright, C.H. 1903. Dioscoreaceae. *In*: An Enumeration of all the Plants known from China Proper, Formosa, Hainan, Corea, the Luchu Archipelago, and the Island of Hongkong together with their Distribution and Synonymy. J. Linn. Soc., Bot. **36**: 90–94.

*(Manuscript received on 1 February 2016; revised on 10 April 2016)*