

### Medical quiz: image 2

Rahim MA<sup>a</sup>

A 70-year-old lady from a southern, coastal district of Bangladesh, presented with a 4-month history of anorexia and weight loss. She received medical advice locally by village doctors, took anti-ulcer drugs, anti-emetics and vitamins, without any benefit. Because of COVID-19 pandemic, she failed to manage to seek medical advice from District Sadar Hospital, she added.

The lady was thin, wasted and anaemic. There was a non-tender, hard swelling in left side of neck (Figure 1). An upper gastro-intestinal (GI) endoscopy was performed (Figure 2).

**Answer the following question.**

**Question 1.** What is the most likely diagnosis?

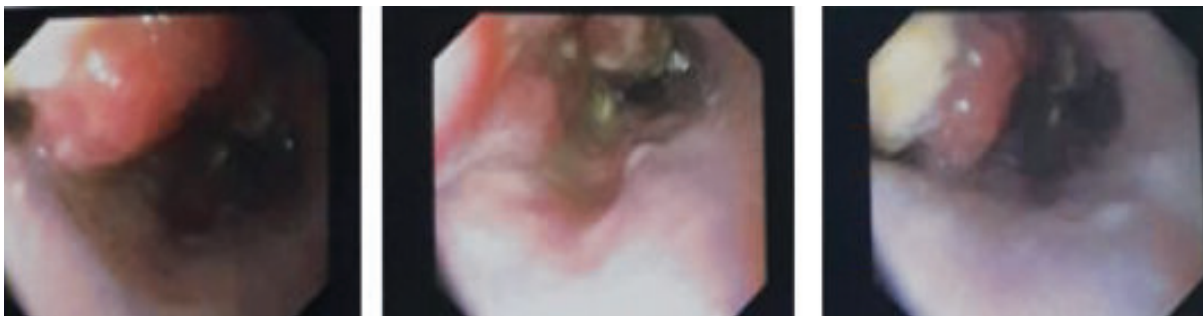
**Question 2.** Before requesting for the upper GI endoscopy, what other systemic examinations are needed?

**Question 3.** Mention 3 important risk factors for such a diagnosis?

**Question 4.** Will you suggest any precaution before doing upper GI endoscopy in COVID situation?



**Figure 1** Swelling in the left supra-clavicular region



**Figure 2** Endoscopic view of the oesophagus